

**MIDDLETON ELDERLY AID
CHRISTMAS NEWSLETTER**



DECEMBER 2010

18 Middleton Park Road
Leeds
LS10 3ST
Tel 0113 2721050
Email: middletonelderlyaid@btconnect.com
Website: www.middletonelderlyaid.org.uk
Registered Charity No 1100601

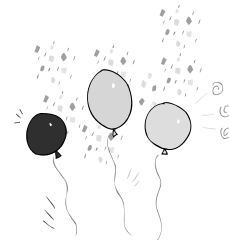
Welcome to your December newsletter

I can't believe another year has passed - we've been so busy at Middleton Elderly Aid, the time really does fly!

On behalf of the Trustees, Staff and Volunteers I would like to wish you all a very happy Christmas and best wishes for the New Year.

Middleton Elderly Aid Christmas Party 8th December 2010 12.00 - 5pm

Have you got your ticket to our Christmas Party? There are still some places left. Tickets cost £8.00 Included in the cost is a buffet lunch, entertainment with Jonny Martell an international Star, Vocal and Comedian, bingo and much more. Last year was a huge success and enjoyed by all who joined us. If you cannot get into the office to purchase your ticket, a member of staff or volunteer will be available to deliver one to you. Please come along and join us in our Christmas celebrations.



Oswaldtwistle Trip 28th February 2011 £18.00 including entertainment and a meal

We are taking names for our next trip which will take place on Monday 28 February to Oswaldtwistle Mills. We have changed the menu to the following choices, Soup or fruit juice, Roast Chicken Dinner or Fish Pie, Jam sponge or Ice Cream. If you could let us know your choice of meal when you book, this would be most helpful. For anyone who has not joined us on a trip to Oswaldtwistle Mills previously, it is a wonderful experience with shopping and entertainment including singing and dancing.



Christmas Opening times

Our offices and shop will be closed over the Christmas period from 1.00pm on Friday 24th December 2010 until 9.00am on Tuesday 4th January 2011. Belle Isle Winter Aid will be open over the Christmas Period (excluding bank Holidays) and can be contacted on 2778208 if you have any problems that cannot wait.



Electronic Version of the Newsletter

It costs about 90p per member to send out this newsletter, so would you be willing to have the newsletter sent to you electronically? If you would, it would save a lot of money every year. So please sign up for this service now by emailing middletonelderlyaid@btconnect.com Please put "E-mail newsletter" in the subject box.



Car Scheme

This is a new membership scheme in Leeds that provides you with a low cost, reliable and accessible alternative to calling a taxi. It has been designed specifically to support people who might have difficulty using public transport and where taxis don't meet all of your needs. Drivers are specially trained to help people who might need more support, patience and understanding when they make their journey. Membership only costs £1. For an application form call Leeds Alternative Travel on 0113 386 8880 or visit www.YourCar.org.uk Once you've registered, you pre-book journeys by phone and pay at the end of each journey



Super Draw Number

October - (1016-£50) (1018-£10) (1069-£5)

November- (1094-£50) (1098-£10) (1100-£5)

Digital Switchover Information

With Christmas and 2011 fast approaching, many of you may also be aware that the coming year also heralds a new, digital age in television for our region. As part of the promotion of the Help Scheme, twelve members of MEA took to the dance floor in Leeds Train Station on 1st November with former Strictly Come Dancing winner and Yorkshire and England cricketer, Darren Gough and Maggie Philbin. The reason for this was to promote the digital TV switchover.



Infostore Website

This is a special website which is aimed specifically at people aged over 50 in Leeds, together with their friends, carers and family. The Infostore website aims to provide accurate, up-to-date information on areas of specific interest to older people. It has lots of useful leaflets, documents, news and events taking place within the Leeds area, together with more general advice issues. If you want to take a look the website address is www.olderpeopleleeds.info

Thanks to our Volunteers

We are very grateful to our volunteers for all their help and support throughout the year. Volunteers are our greatest asset and Middleton Elderly Aid would not be able to operate without you.

Summer Holiday 2011 - 5 day Holiday to Morecombe 27 June 2011 - 1 July 2011

We have decided to offer for the first time a five day holiday to our members. This is a joint holiday with Belle Isle Winter Aid. We will be staying at The Lotherdale Hotel in Morecambe. Four nights' bed, breakfast and evening meal, two excursions and entertainment each evening is included in the price. Both organisations have been allocated 19 seats each, we expect this holiday to be oversubscribed; we have enclosed a booking form for completion. All booking forms need to be returned to MEA office by 20th December and all names will be put into a draw and successful people will be notified on the 22nd December. a deposit of £50 needs to be paid by 5th January. The total cost for the holiday will be £230.

THE NEW TELEPHONE SCAM HAS ARRIVED!!

Please take note that we have been informed by Adult Social Care of new telephone scams that are taking place in Leeds. Do not give any of your details to the callers. The latest scams are from people implying that they are from BT and the Water Board.



Garden Final Visit of the Year

If you would like a final garden visit before the end of the year to tidy up before the winter sets in, please give Debra a ring to arrange.

Farewell to our Gardener

On a sad note, after many years of carrying out garden maintenance for our members, Ronnie has decided to retire at the end of December. We would like to thank him for his dedicated service to MEA and I know how many of you will miss his friendly face and caring ways. We all wish him a very happy retirement and a big thank you for all the work he's done over the years. If anyone would like to sign our retirement card for Ronnie, please drop in to the office and sign your name before the 10th December.

Charity Shop News

The shop is now open on a Saturday 9.00am - 1.30pm, so far this has been a huge success, giving people who work the opportunity to donate and purchase items. It also gives us as a charity, a chance to promote all the good work that we do. We are still appealing for donations of goods, bric a brac and prizes for our Bingo and raffles.

**MIDDLETON ELDERLY AID NOW OFFERS A
COMMUNITY OUTREACH SUPPORT
DROP-IN CLINIC
FOR PEOPLE WHO ARE**

DEAF AND HARD OF HEARING

DO YOU HAVE A NHS HEARING AID?

WE CAN HELP WITH:

- **Supply and fitting of new batteries**
- **Supply and fitting of new tubing**
- **Advice on maintenance and fitting**
- **Support and training on using your aid**

For a FREE monthly service and help

DROP-IN at :

**Middleton Elderly Aid
18, Middleton Park Road,
Leeds LS10 3ST**

**2nd Tuesday of the month
between 1.30pm and 3.30pm**

RNID Hear to Help project, Leeds

Funded by the Co-operative

RNID ● |||
for deaf and hard of hearing people